

Brand Guidelines



Introduction

“Termene.ro este o platformă completă care oferă informații oficiale și actualizate în timp real despre datele financiare și juridice ale firmelor din România”

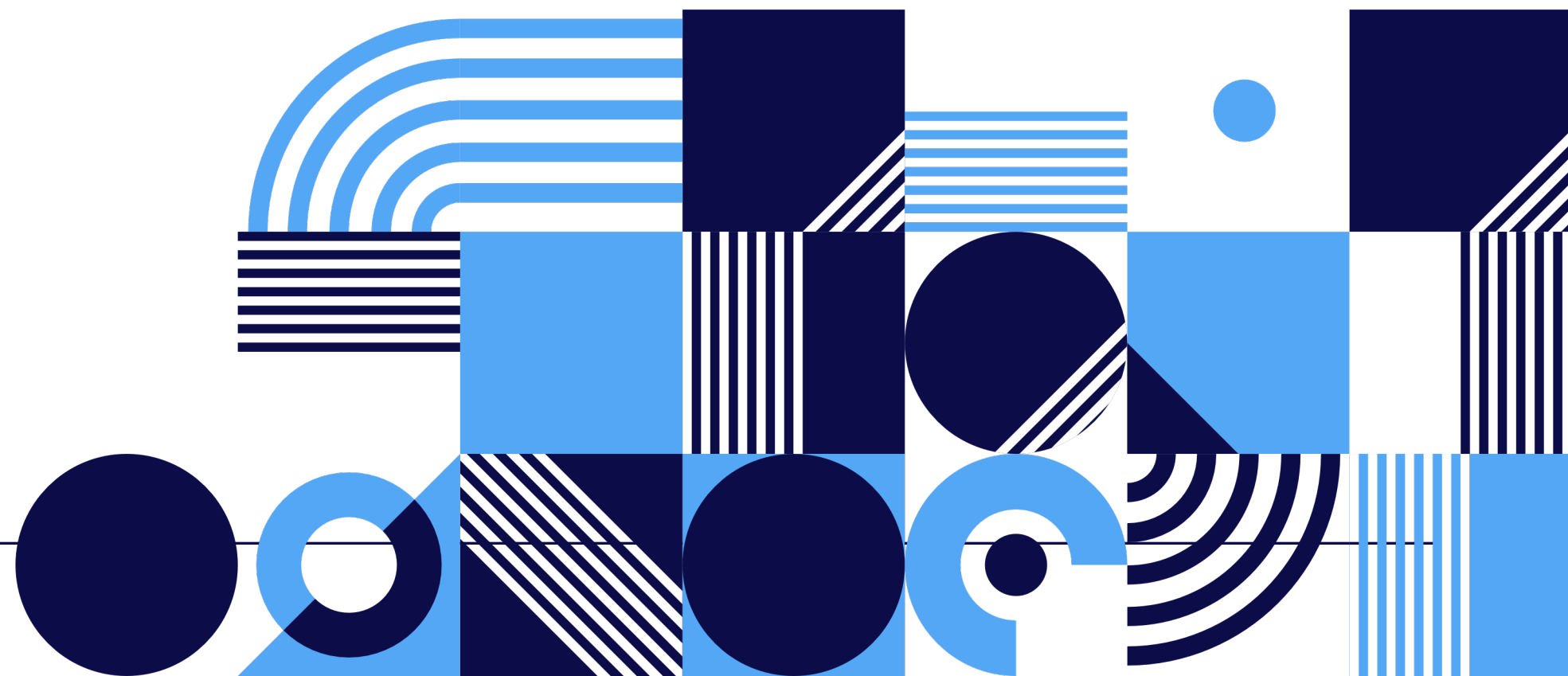
Our Mission

O relație de afaceri se bazează în primul rând pe respect și încredere între parteneri. Termene.ro traduce încrederea în cifre și informații solide care stau la baza unui parteneriat de succes.

Scopul nostru este să putem contribui la un mediu de afaceri sănătos pentru România

Our Vision

Valorile noastre ne fac ceea ce suntem. Creștem și învățăm permanent, însă convingerile noastre rămân mereu aceleași



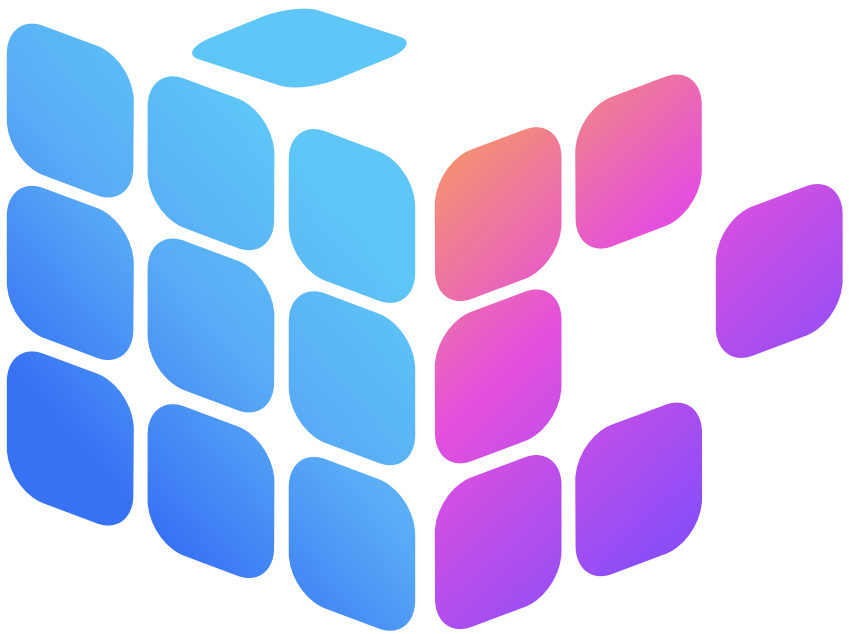


The cube

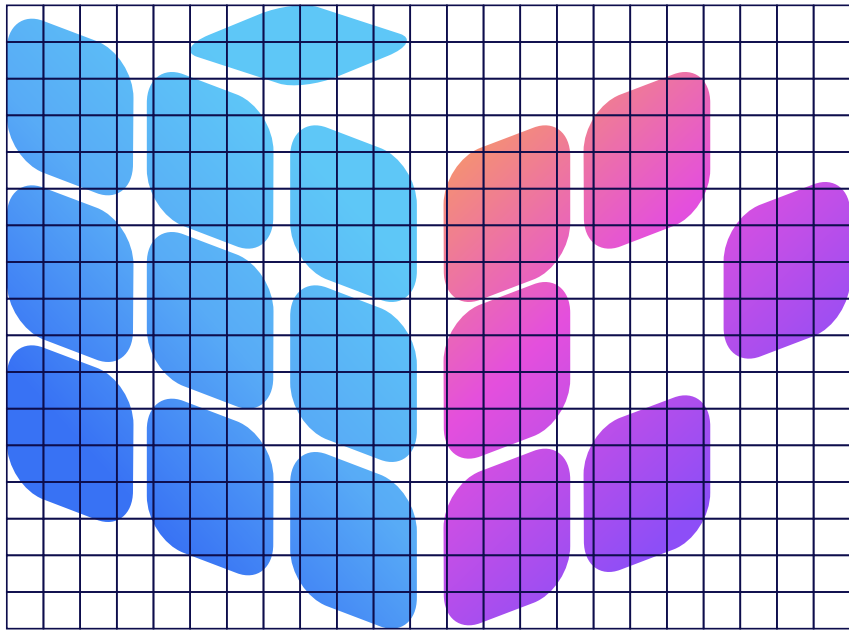
The cube is composed of simple geometric shapes and Termene’s brand colors.

The symbol is legible at most sizes, and a small version is provided for micro applications.

The cube



17x23 Grid



Usage on backgrounds

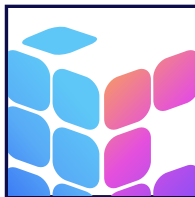
The full-color logos should be used only on white and pure colored backgrounds.

Avoid using full-color logos on photographs unless the logo sits on a black or white area of the image.



Logo misuse

Do not crop the logo



Do not change the transparency of the logo



Do not shuffle around the colors of the cube



Do not use different colors



Do not change the size or position of the cube and logotype.



Do not distort the logo



Do not use drop shadows or any other effects



Do not re-create using any other typeface



Do not outline logotype



Do not rotate any part of the logo



Minimum size

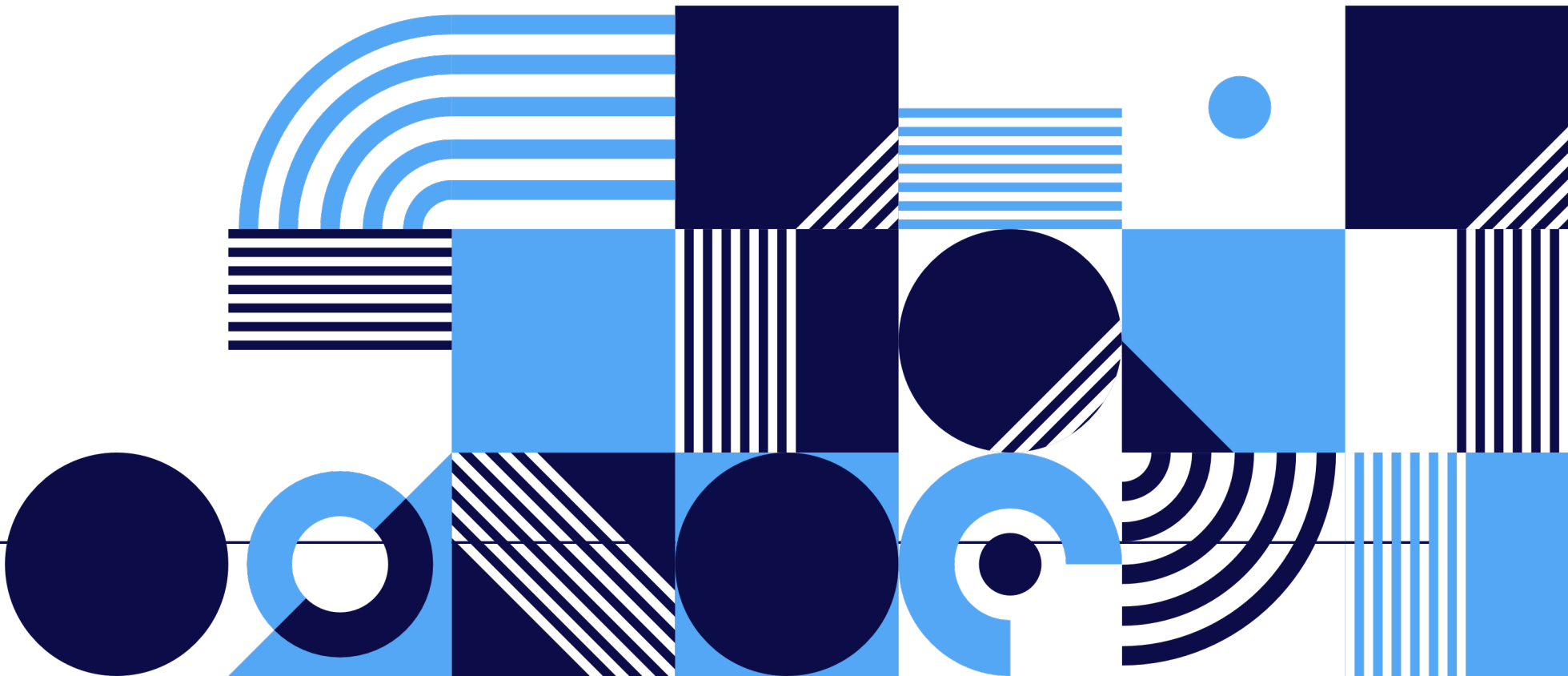
Establishing a minimum size ensures that the impact and legibility of the logo is not compromised in application.



150px wide, approx.
(or 1.5625 inches)



32px wide, approx.
(or 0.33 inches)





Icons

In cases when the Termene brand has already been established we can simply use the icon on its own. While the icon can exist without the wordmark, the wordmark should never exist without the icon.

The symbol can be used as a stand-alone symbol in some applications, depending on it's intended destination.





Core colors

Use these color proportions in any layout or collateral design. Text should always be set in paua, royal blue and medium aquamarine.

White and Paua should be used as primary colors.

Medium Aquamarine, Royal Blue, Malibu and Maya Blue should be used as secondary colors.

Sandy Brown, Wild Watermelon, Free Speech Magenta, Medium Late Blue and their variations should be used as accent colors in the proportions outlined in this document. They can also be used as secondary/safety colors if the proportions are kept to the ratio outlined in this document.

<div>White</div> <div>HEX FFFFFFFF</div>	<div>Paua</div> <div>HEX 0D0D4C</div> <div>CMYK 0.83 - 0.83 - 0 - 0.70</div> <div>RGB 13 - 13 - 76</div>	<div>Royal Blue</div> <div>HEX 3872F4</div> <div>CMYK 0.77 - 0.53 - 0 - 0.04</div> <div>RGB 56 - 114 - 244</div>	<div>Malibu</div> <div>HEX 58ABF6</div> <div>CMYK 0.64 - 0.30 - 0 - 0.04</div> <div>RGB 88 - 171 - 246</div>
		<div>Medium Aquamarine</div> <div>HEX 21F28A</div> <div>CMYK 0.86 - 0 - 0.43 - 0.05</div> <div>RGB 33 - 242 - 138</div>	<div>Maya Blue</div> <div>HEX 5EC7F7</div> <div>CMYK 0.62 - 0.19 - 0 - 0.03</div> <div>RGB 94 - 199 - 247</div>
<div>Wild Watermelon</div> <div>HEX FF5A65</div> <div>CMYK 0 - 0.65 - 0.60 - 0</div> <div>RGB 255 - 90 - 101</div>	<div>Free Speech Magenta</div> <div>HEX E44FDD</div> <div>CMYK 0 - 0.65 - 0.03 - 0.11</div> <div>RGB 228 - 79 - 221</div>	<div>Medium Slate Blue</div> <div>HEX 8C4EF7</div> <div>CMYK 0.43 - 0.68 - 0 - 0.03</div> <div>RGB 140 - 78 - 247</div>	<div>Sandy Brown</div> <div>HEX F89F5C</div> <div>CMYK 0 - 0.36 - 0.63 - 0.03</div> <div>RGB 248 - 159 - 92</div>
<div>Mandy</div> <div>HEX E04550</div> <div>CMYK 0.69 - 0 - 0.35 - 0.02</div> <div>RGB 76 - 249 - 163</div>	<div>Deep Magenta</div> <div>HEX B51FAE</div> <div>CMYK 0 - 0.83 - 0.04 - 0.29</div> <div>RGB 181 - 31 - 174</div>	<div>Purple Heart</div> <div>HEX 5C28B5</div> <div>CMYK 0.49 - 0.78 - 0 - 0.29</div> <div>RGB 92 - 40 - 181</div>	<div>Eucalyptus</div> <div>HEX 25AB68</div> <div>CMYK 0.78 - 0 - 0.39 - 0.33</div> <div>RGB 37 - 171 - 104</div>

Accessible color combinations

Establishing a minimum size ensures that the impact and legibility of the logo is not compromised in application.

White on Paua

White on Paua

Medium Aquamarine on Paua

Medium Aquamarine on Paua

White on Royal Blue

White on Royal Blue

Paua on Wild Watermelon

Paua on Wild Watermelon

Text on Gray 1

Headline on Gray 1

Text (active) on Gray 2

Headline (active) on Gray 2

Text on Gray 2

Headline on Gray 2

Text (active) on Gray 1

Headline (active) on Gray 2

One-color use

The one-color logo should be used only on color backgrounds and photographs within Termene's color palette.

The one-color logo should only be used in paua and white colorways.

If you're using a paua background, we strongly prefer using the full-color logo.





Typography: Gilroy

Establishing a minimum size ensures that the impact and legibility of the logo is not compromised in application.

Aa Bb Cc Dd Ee Ff Gg Hh Ii Jj Kk
Ll Mm Nn Oo Pp Qq Rr Ss Tt Uu
Vv Ww Xx Yy Zz 0123456789

Light	The spectacle before us was sublime.
<i>Light Italic</i>	<i>The spectacle before us was sublime.</i>
Regular	The spectacle before us was sublime.
<i>Regular Italic</i>	<i>The spectacle before us was sublime.</i>
Medium	The spectacle before us was sublime.
<i>Medium Italic</i>	<i>The spectacle before us was sublime.</i>
Semibold	The spectacle before us was sublime.
<i>Semibold Italic</i>	<i>The spectacle before us was sublime.</i>
Bold	The spectacle before us was sublime.
<i>Bold Italic</i>	<i>The spectacle before us was sublime.</i>
Extrabold	The spectacle before us was sublime.
<i>Extrabold Italic</i>	<i>The spectacle before us was sublime.</i>

Typography: Avenir Next

Establishing a minimum size ensures that the impact and legibility of the logo is not compromised in application.

Aa Bb Cc Dd Ee Ff Gg Hh Ii Jj
Kk Ll Mm Nn Oo Pp Qq Rr Ss Tt
Uu Vv Ww Xx Yy Zz
0123456789

Ultra Light	The spectacle before us was sublime.
<i>Ultra Light Italic</i>	<i>The spectacle before us was sublime.</i>
Regular	The spectacle before us was sublime.
<i>Regular Italic</i>	<i>The spectacle before us was sublime.</i>
Medium	The spectacle before us was sublime.
<i>Medium Italic</i>	<i>The spectacle before us was sublime.</i>
Semibold	The spectacle before us was sublime.
<i>Semibold Italic</i>	<i>The spectacle before us was sublime.</i>
Bold	The spectacle before us was sublime.
<i>Bold Italic</i>	<i>The spectacle before us was sublime.</i>
Heavy	The spectacle before us was sublime.
<i>Heavy Italic</i>	<i>The spectacle before us was sublime.</i>

Typography: Ideal stack

Headline

Gilroy
Bold, 64 pt

Aenean luctus pretium

Subtitle

Gilroy
Semi Bold, 40 pt

Duis interdum, elit vitae pulvinar interdum

Quote

Avenir Next
Medium, 24 pt

Maecenas tellus arcu, pretium ut quam vitae, consequat pulvinar eros. Duis interdum, elit vitae pulvinar interdum, neque arcu placerat justo.

Body Copy

Avenir Next
Regular, 16 pt

Etiam ac luctus ex. Sed viverra accumsan sem et feugiat.





Patterns and guides

Heading

Nam porttitor blandit accumsan. Ut vel dictum sem, a pretium dui. In malesuada enim in dolor euismod, id commodo mi consectetur.

Curabitur at vestibulum nisi. Nullam vehicula nisi velit. Mauris turpis nisl, molestie ut ipsum et, suscipit vehicula odio.



Heading

Nam porttitor blandit accumsan.



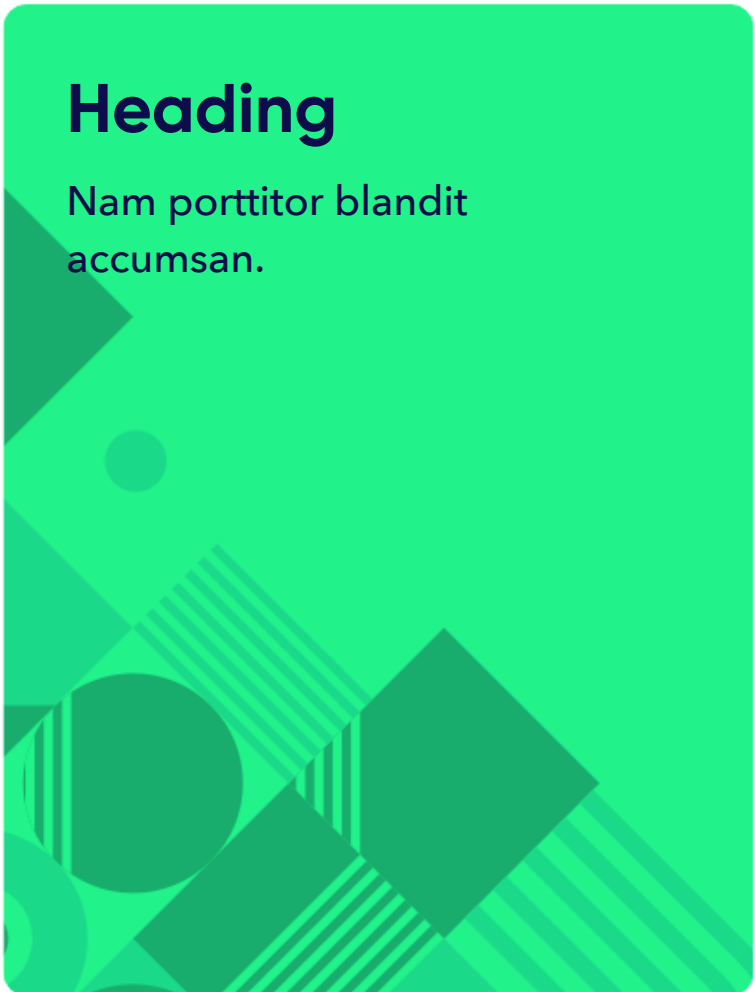
Heading

Nam porttitor blandit accumsan.



Heading

Nam porttitor blandit accumsan.



Heading

Nam porttitor blandit accumsan.

